

**NASSCOM®**

**11th Defence Information Technology Consultative Committee (DITCC) Meeting**

**23<sup>rd</sup> November 2016**

- Support for not only AMD and Intel Processors, but also GPU(s) which in future will be needed for analyzing huge chunks of data.
- Recommend leveraging BOSS (Bharat Operating System) and enhancing the same for Indian Army needs. BOSS is an Indian GNU/Linux distribution developed by CDAC and is customized to suit Indian's digital environment.
- Recommend building an Operating System for Native Mobile Application.
- Emphasis must be also on – Cloud Operating Systems and Virtualization/Hypervisor technology on top of the Operating System.
- Cloud Focus is key - It can leverage OpenStack. OpenStack is open source platform for creating and managing large groups of virtual private servers in a cloud computing environment.

# Industry Views on Indigenous OS

NASSCOM®



Agility

*“Simple to deploy, maintain and upgrade”*

*“Should be platform independent and cloud adoptable with self healing capabilities”*

*“Should track all applications and provide insight to application performances ”*



Platform Independent



Ease Portability

*“Should be capable enough to enable easy portability of apps across environments”*

*“Should be secured enough to shell its environment from possible threats ”*



Security

# Views on OS Security Threats & Hardening

## Type of Security Threats

Unpatched & unused services

Default OS services which are not tested for application can cause threat

Inherent Insecure services

May lead to man-in-the-middle-attach, NFS threat

May install unneeded services and trigger unwanted services creating a security threat

Unused open ports

Unsecured passwords are the most vulnerable threats system can have

Inappropriate password setting

## Common Attacks

Null/Default

PASSWORD

XXXXX

IP Spoofing



Eavesdropping

Denial of Service

## OS Hardening

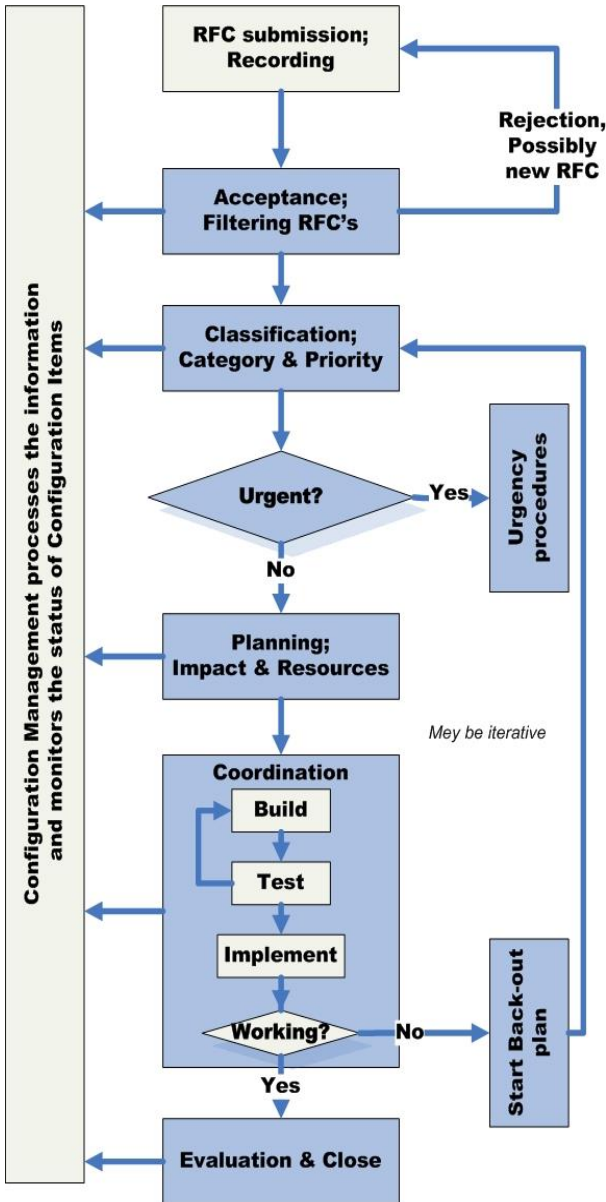
1 Securing BIOS

3 Install only required signed packages

5 Enable Firewall features

2 Securing Non-BIOS-based systems (like UEFI)

4 Fine tune kernel parameters



## Change Management consists of:

- raising and recording changes
- assessing the impact, cost, benefits and risks of changes
- developing the business justification and obtaining approval
- management and co-ordination of change implementation
- monitoring and reporting on the implementation
- closing and reviewing change requests

## Change Management is responsible for managing change processes for:

- hardware
- communications equipment and software
- system software
- "live" application software
- all documentation and procedures associated with the running, support and maintenance of live systems

- The GIS software can be grouped into Desktop based, Web based and mobile based and should be customizable to meet the requirements.
- The focus also should be on Open Spatial database as well, like Postgres.
- The GIS Software should be able to import from/export to the popular GIS data formats of the industry without any third part proprietary ETL software.
- The GIS software should have the Image Processing functionalities also.
- The software should be compatible with the multiple Operating Systems being planned.

- Focus must not only be RDBMS- but also include Graph Databases, Columnar Databases, Document Oriented Databases, OLAP , RDF (Resource Descriptor Framework ) , Key-Value and Time-Series Databases.
- Recommend leveraging Apache tools as the starting point than developing grounds up.
- In-Memory Databases must be in the scheme of things- Hadoop and Spark Environments must be kept in mind.
- Must be supported on various popular operating systems in order to ensure backward compatibility.
- Horizontal and Vertical Scalability is key. Comprehensive Tools for Management, Monitoring and Administration is key.
- Columnar Security and Transparent Encryption needs also to be given emphasis.
- Disaster Recovery Mechanisms can be built into the solution.

**NASSCOM®**

**THANK YOU**